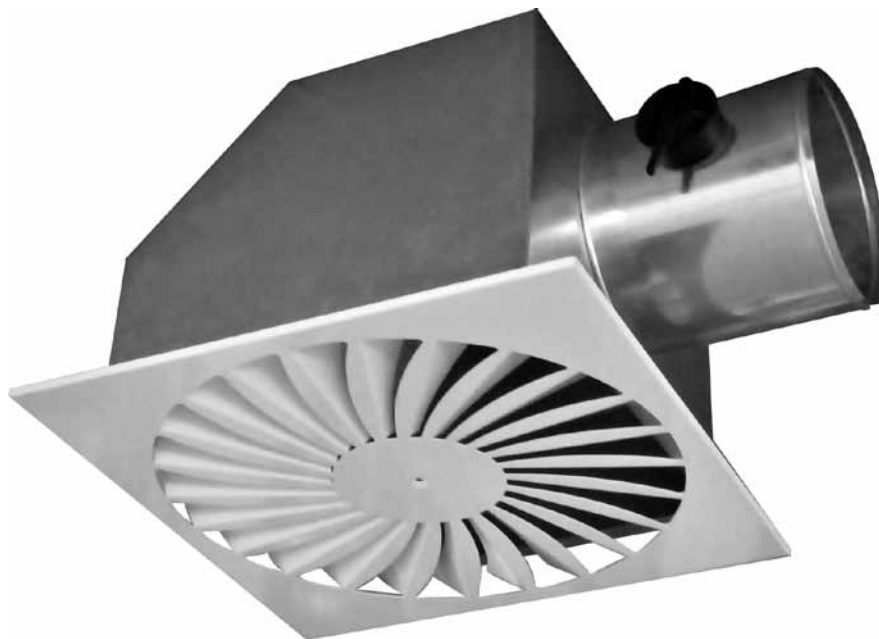


CDN – SWIRL CEILING DIFFUSERS



Description

- Swirl ceiling diffusers are designed for fresh air supply in the ventilation and air-conditioning installations when fast uniform distribution of cold air in summer mode is needed.
- Suitable for heating of premises with height up to 3 m.
- Designed for premises where year-round cooling is necessary.

Construction

- Constructed of galvanized metal sheets with powder coating.
- Fixed number of blades, arranged on the decorative part ensures optimal air exchange at low noise levels.
- Standard colour RAL 9010, upon customer's request painting in all RAL colours is possible.

Installation

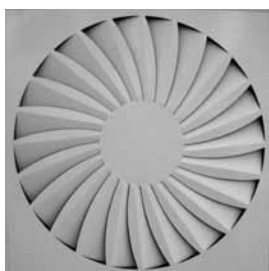
- Diffusers are mounted to the air duct system with plenum box and flexible duct. Fixing to the plenum box is arranged with a central bolt.

Accessories

- Plenum box (+K)
- Regulation damper installed inside (+Di) or outside (+De) plenum box
- Internal insulation (+Ii) or external insulation (+Ie) of the plenum box
- Kit for plenum box fixing to Armstrong type ceiling (+MK)

Modifications

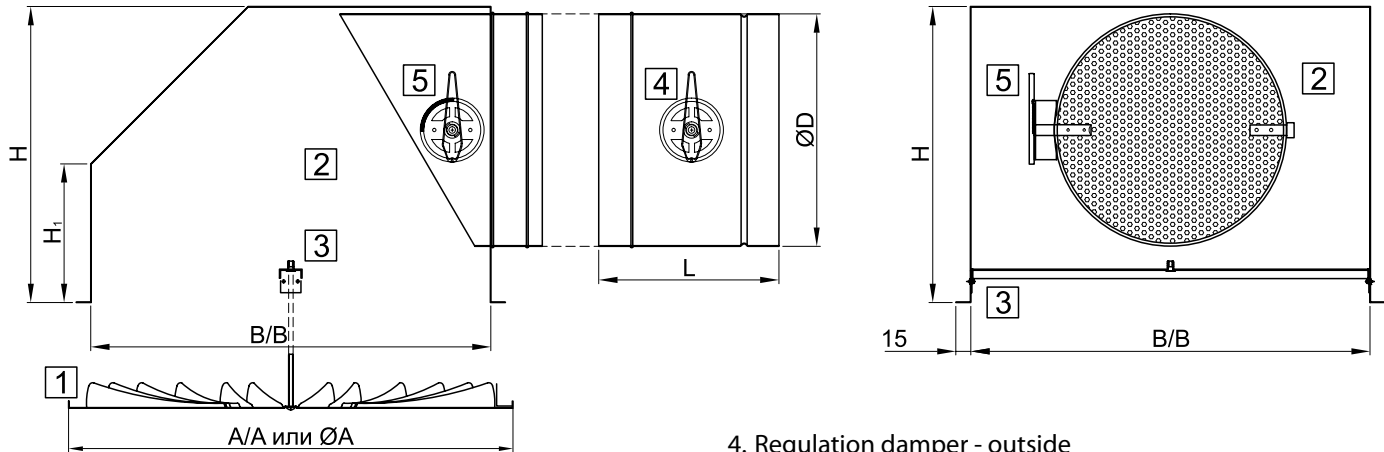
CDN-S - Square swirl diffuser



CDN-R - Round swirl diffuser



Overall and joined dimensions



1. Ventilation diffuser
2. Standard plenum box with side connector
3. Profile for fixing of the diffuser to the plenum box with a central bolt
4. Regulation damper - outside
5. Regulation valve installed into the plenum box and serviced through the diffuser.
6. Standard version – solid valve. The valve can be made of perforated metal sheet - by request.

| Model | F _{eff} [m ²] | A [mm] | B [mm] | H [mm] | H ₁ [mm] | L [mm] | ØD [mm] |
|---------|------------------------------------|--------|--------|--------|---------------------|--------|---------|
| CDN 300 | 0.069 | 300 | 278 | 230 | 120 | 140 | 145 |
| CDN 400 | 0.077 | 400 | 378 | 280 | 120 | 190 | 195 |
| CDN 500 | 0.085 | 500 | 478 | 280 | 120 | 190 | 195 |
| CDN 600 | 0.092 | 595 | 573 | 330 | 150 | 240 | 245 |
| CDN 625 | 0.092 | 625 | 603 | 330 | 150 | 240 | 245 |

Note: Possibility for production of plenum boxes with different dimensions – on request

Pressure drop [Pa]

| Model | V [m ³ /h] | | | | | | | | | |
|---------|-----------------------|-----|-----|-----|-----|-----|-----|-----|------|--|
| | 150 | 200 | 250 | 300 | 400 | 500 | 600 | 800 | 1000 | |
| CDN 300 | 7 | 11 | 15 | - | - | - | - | - | - | |
| CDN 400 | - | 8 | 11 | 14 | 21 | 29 | - | - | - | |
| CDN 500 | - | - | 7 | 9 | 13 | 16 | 22 | - | - | |
| CDN 600 | - | - | - | - | 10 | 15 | 18 | 28 | - | |
| CDN 625 | - | - | - | - | 10 | 13 | 18 | 27 | 42 | |

Order designation

